

Dan Clark – Cry of the Water
Comments to Coral Reef Task Force
August 11, 2017

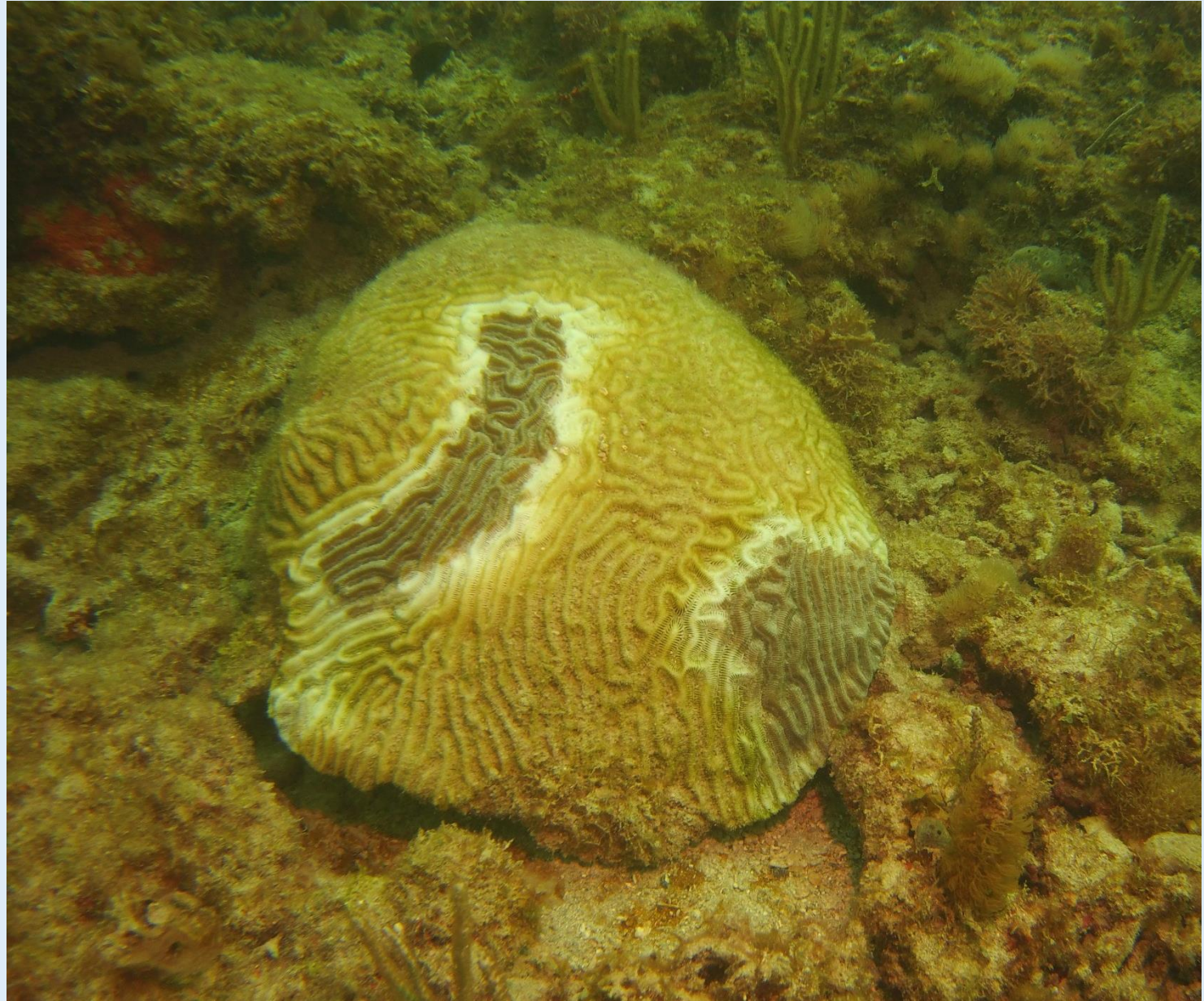


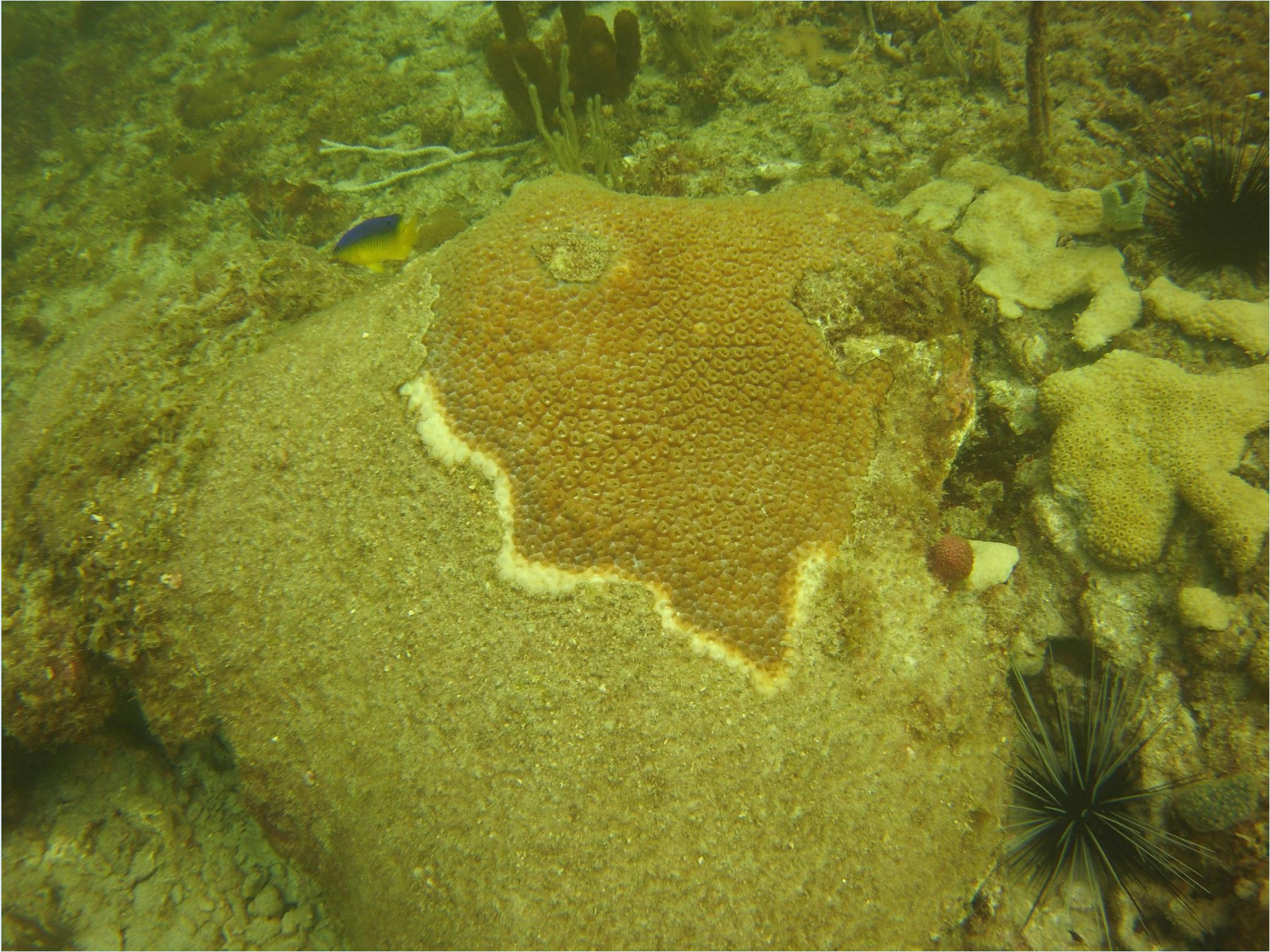
U. S. Coral Reef Task Force Coral Disease Dive Ft. Lauderdale



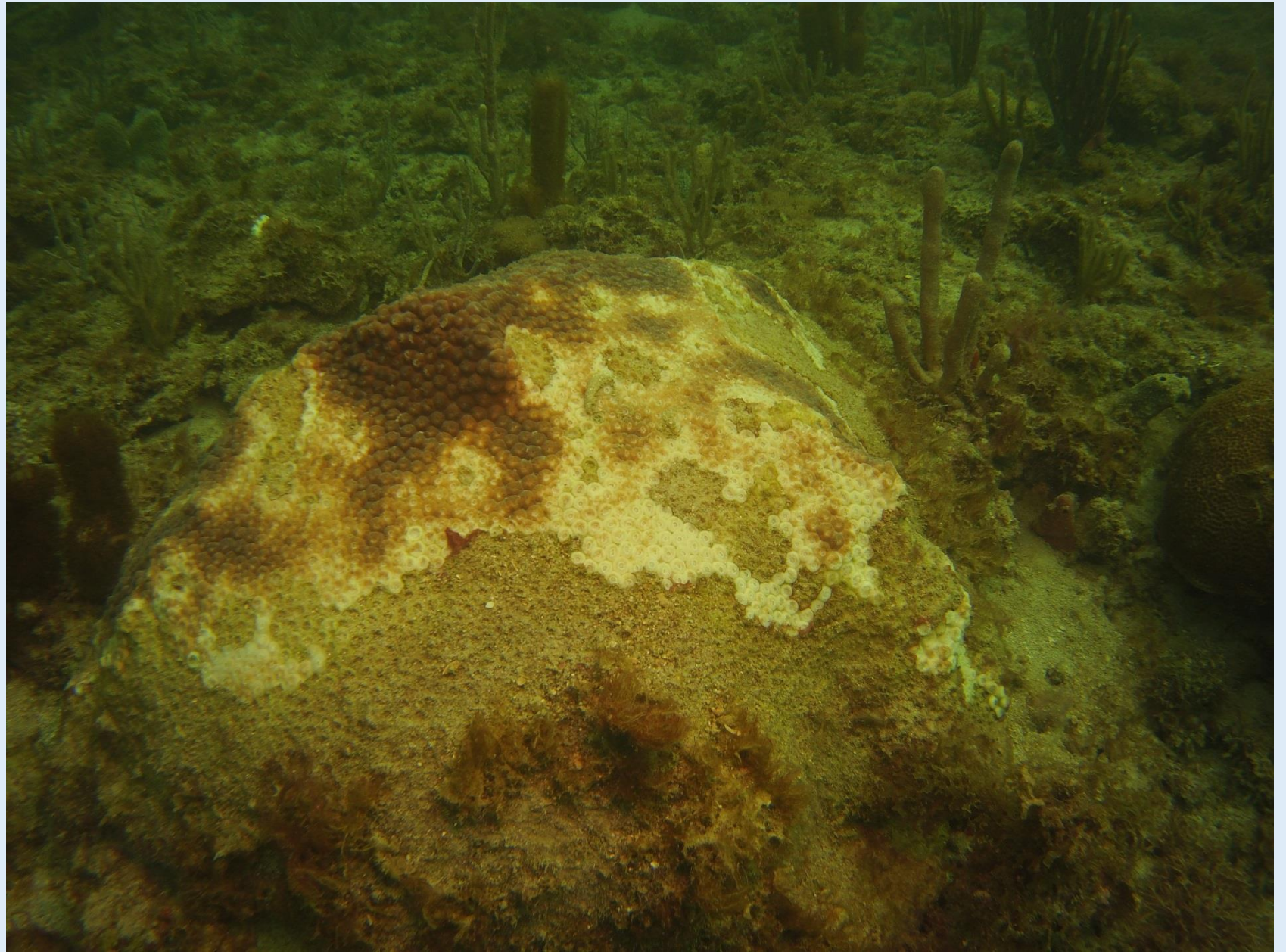
We are 3 years into a major disease outbreak in Southeast Florida.

The reefs that are being lost generate billions of dollars to the local economy.

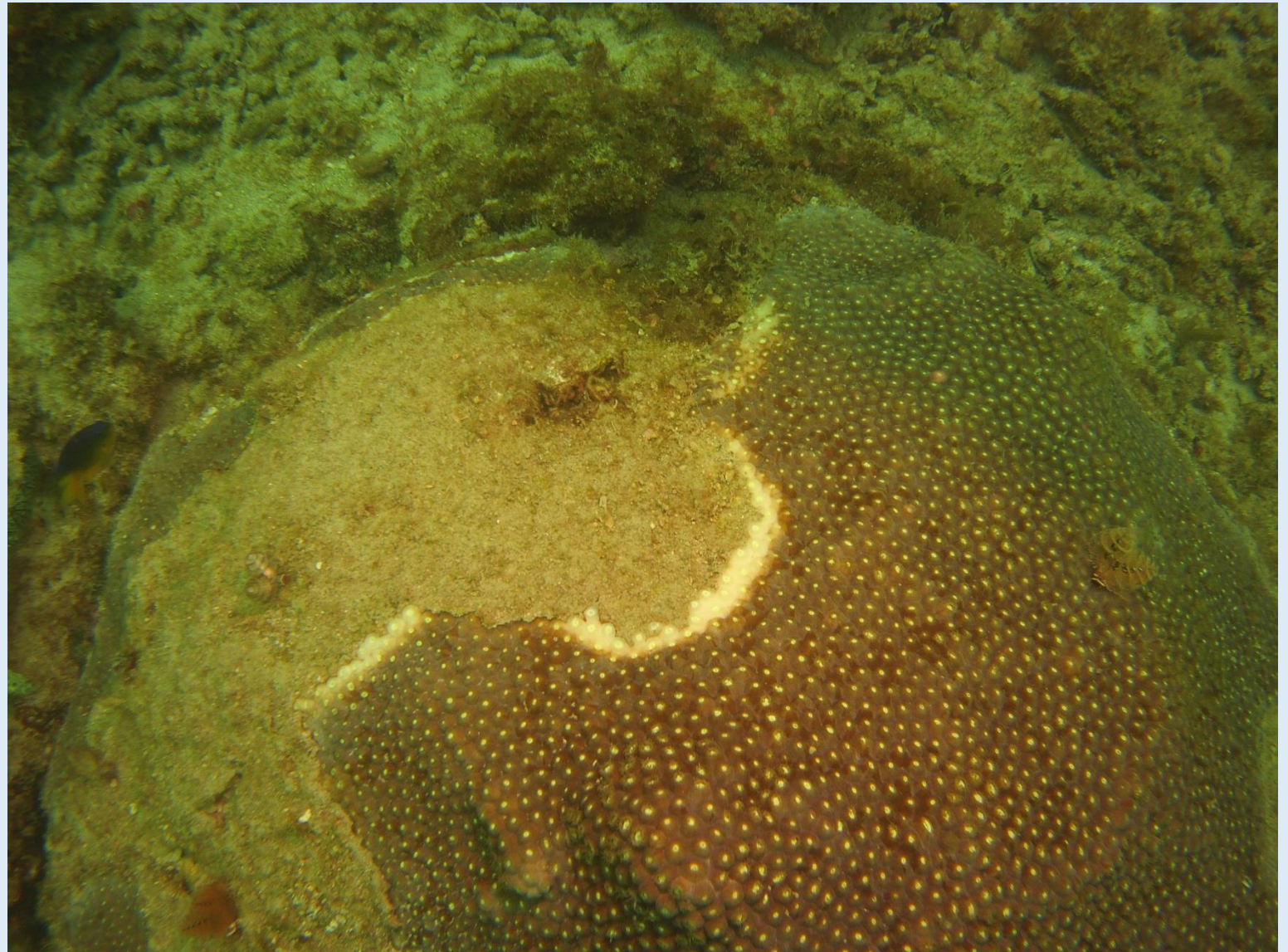




If this disease outbreak was in the agricultural community we would be directing a greater amount of resources to address the issue.



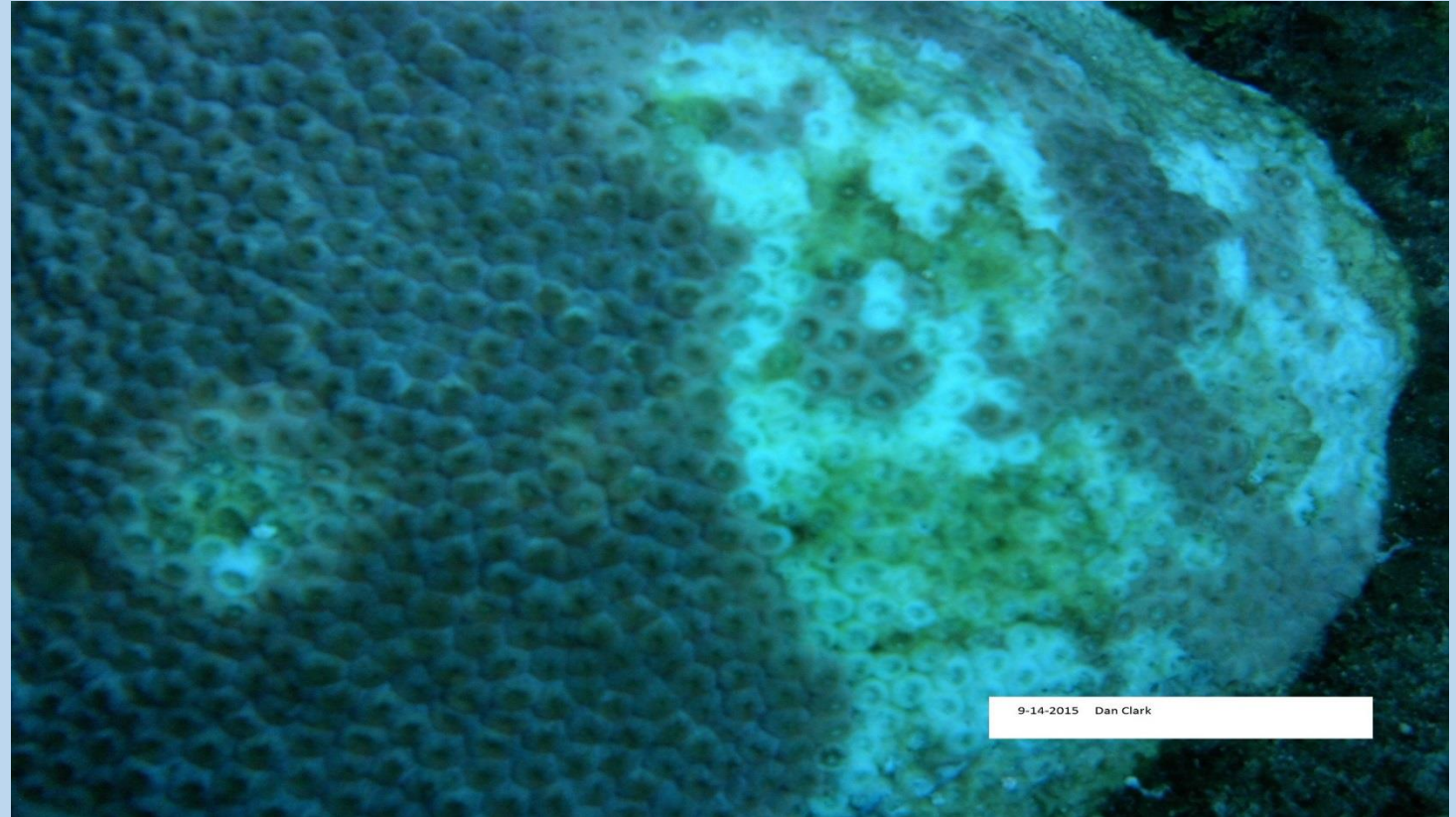
Florida's coral reefs are just as important to the States economy as the sugar or citrus industries.



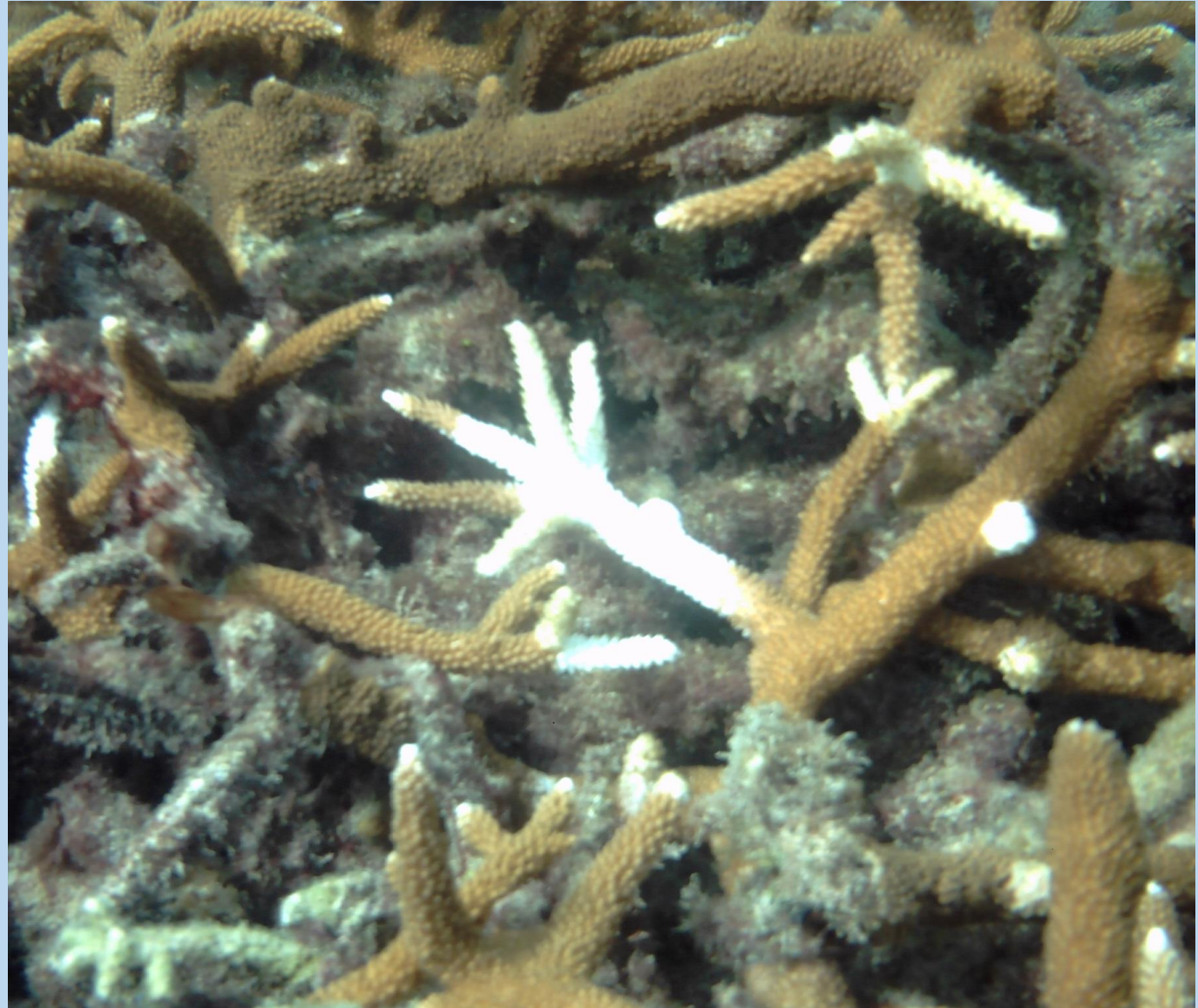
We ask that the
State of Florida
and the Federal
government
dedicate more
resources to
address this
disease outbreak



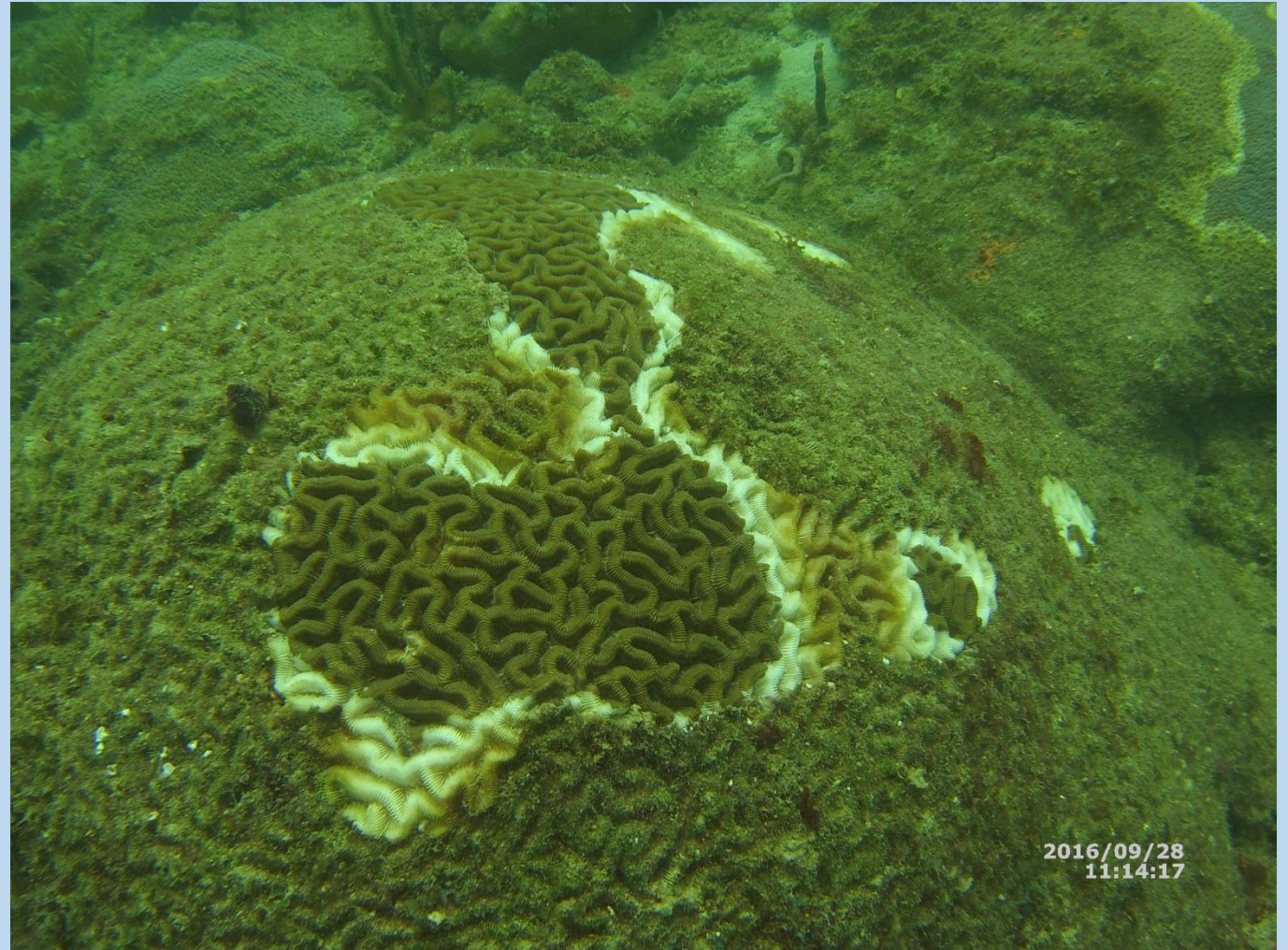
In 2002 the Coral Reef Task Force formed the Coral Disease & Health Consortium to address the disease issue. Unfortunately the consortium has not been properly funded after all these years. The need for that funding is greater now than it has ever been.



We need to find the cause and how the diseases are spreading. Perhaps then we could control this outbreak or at least not spread the disease. It is time we take a common scenes approach to coral reef management



Perhaps if we could show the politicians, stakeholders and public at large how quickly we are losing this multi-billion dollar resource we could secure the funding to better deal with the problem.



In the 1970s over a million tires were dumped offshore of Broward County. These tires have become scattered and are damaging our reefs. They must be cleaned up to prevent further damage to the reefs.



The State takes in over \$10 million a year in tire disposal fees. According to the States website the money is supposed to be used to clean up old tire dump sites. But now that money is going into the general State fund. Since most of the tires dumps on land have been cleaned up, we ask that at least 50 % of the money be dedicated to picking up tires off Broward County.

Over the years some tires have been picked up by Navy and commercial divers. There is currently a new proposal to use a trawl to pick up large amounts of tires. If this pilot project goes forward it must be monitored very closely to avoid physical and sedimentation damage to adjacent reefs.



For the past 16 years we have been asking the Coral Reef Task Force to help establish a Coral Reef Management Plan for Southeast Florida. These reefs are no less important than the reefs in the Florida Keys National Marine Sanctuary. Without a management plan we are unable to implement many of the management actions we have been working on for years.

If we have any hope of preserving this vital resource we can't wait another 16 years.

Dan Clark
Cry of the Water

Cryofthewater.com

reefteam2@yahoo.com

